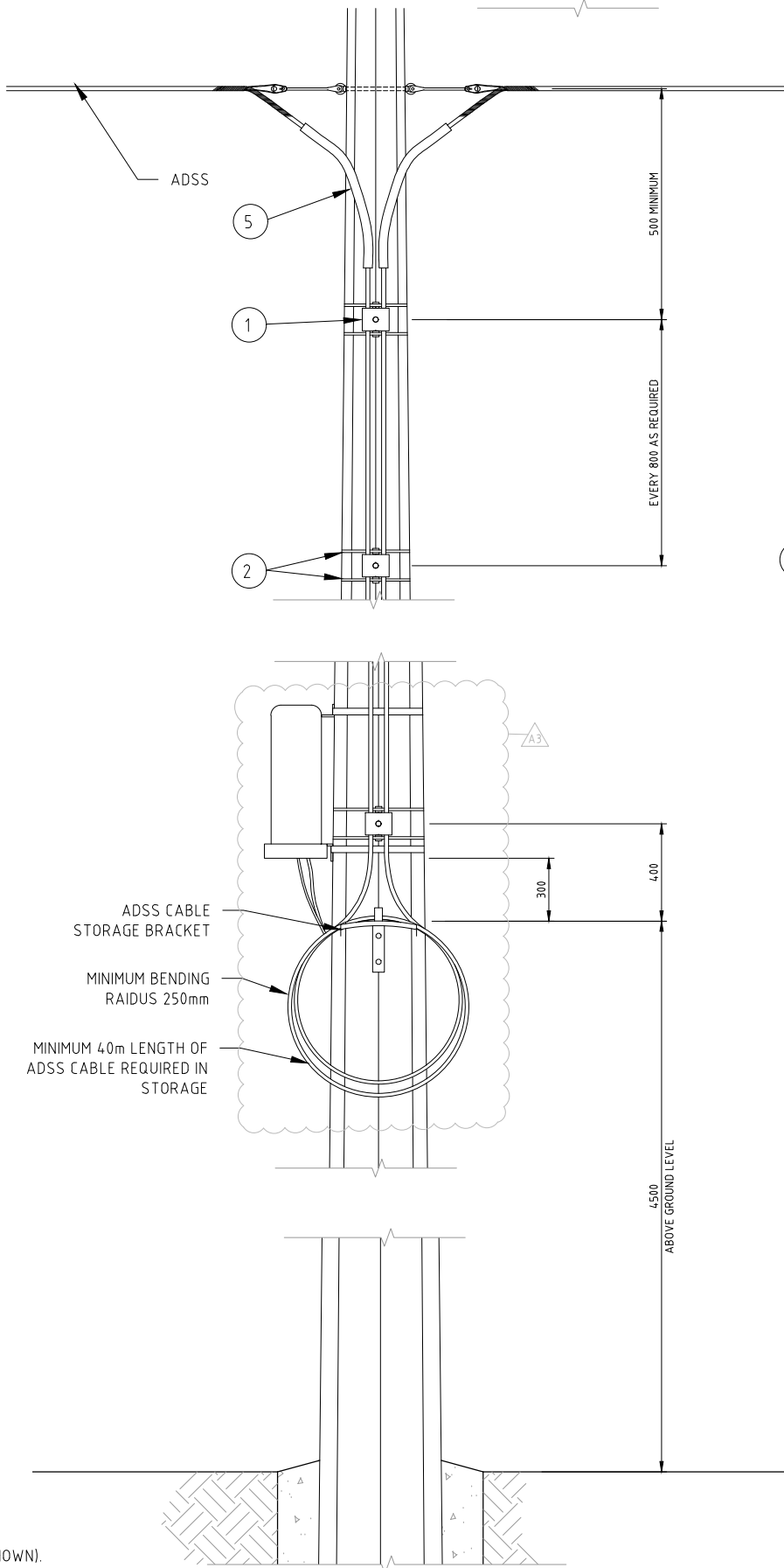


COYOTE ONE DOME ENCLOSURE DETAILS  
NOT TO SCALE

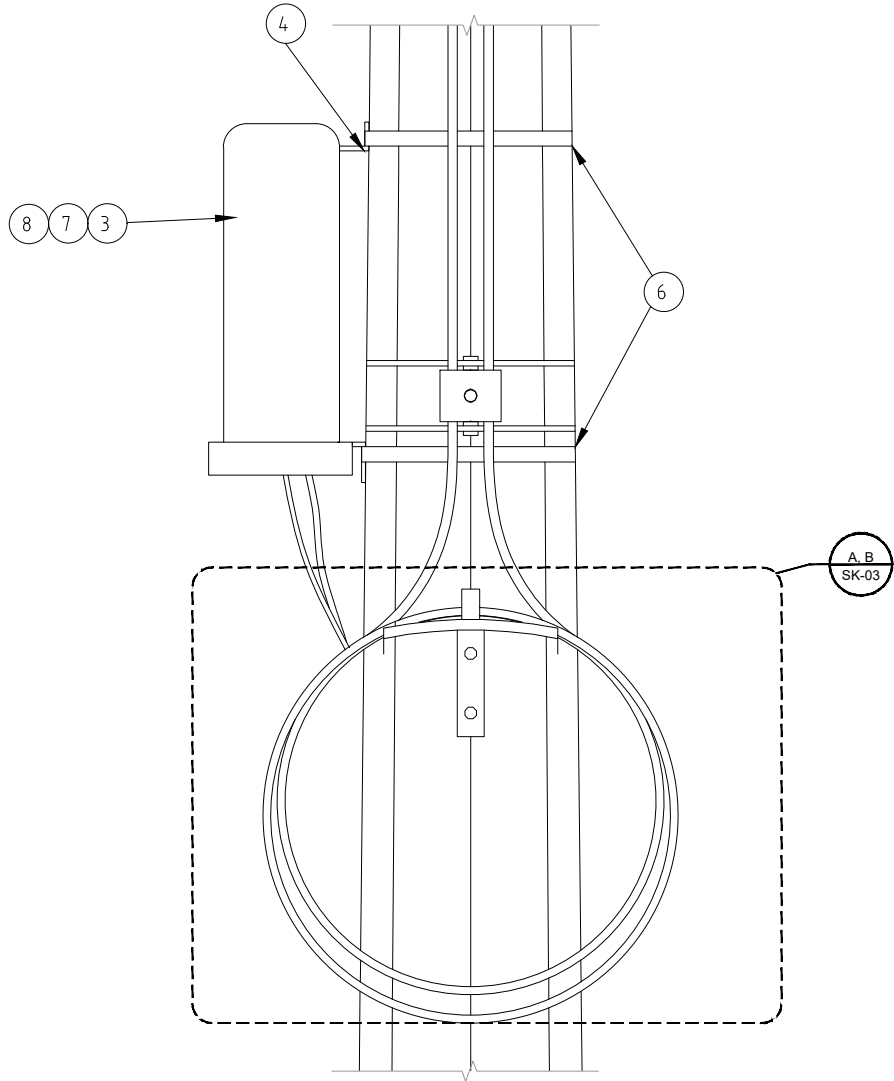
MATERIALS LIST		
TAG NO.	ITEM	QTY
1	DOWNLEAD CUSHION CLAMP	AS REQ
2	STAINLESS STEEL BAND	AS REQ
3	COYOTE DOME ENCLOSURE	1
4	COYOTE ONE POLE/WALL MOUNTING KIT	1
5	CABLE ABRASION PROTECTOR	2
6	19mm GALV STAINLESS STEEL BAND & BUCKLE	2
7	LOW PROFILE SPLICE TRAY (LITEGRIP)	1
8	6 HOLE BOBBIN (SPLICE BOX)	1

REFERENCE DRAWINGS:  
SK-03 ADSS CABLE STORAGE  
SK-06 ADSS CONSTRUCTION SCHEDULE  
SK-12 ADSS PROJECT MATERIAL SCHEDULE

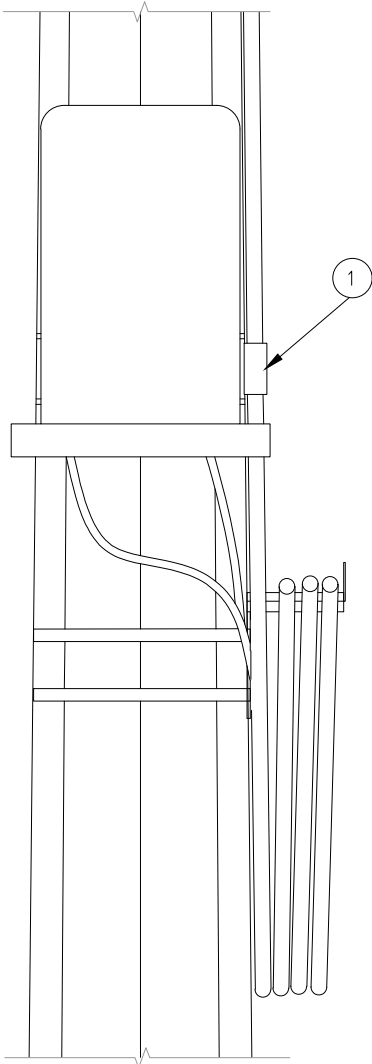
- NOTES
- REFER TO SK-02 FOR TENSION ASSEMBLY.
  - SPLICE BOX MUST BE LOCATED CLOSE TO CABLE STORAGE (APPROX 300mm AS SHOWN).
  - REFER TO SK-03 FOR CABLE STORAGE DETAILS
  - REFER TO POLE SCHEDULE FOR MOUNTING TYPE AND NUMBER OF DOWNLEAD CUSHIONS REQUIRED.
  - REFER TO MATERIAL SCHEDULE (SK-12) FOR THE RECOMMENDED STOCK CODE ITEM.
  - CUSHION CLAMPS RECOMMENDED TO BE SPACED 800mm APART AS SHOWN, WITH A MAXIMUM SPACING OF 900mm.




TRANSVERSE FACE  
SCALE 1:10



TRANSVERSE FACE - DETAIL  
SCALE 1:5



LONGITUDINAL FACE - DETAIL  
SCALE 1:5

							CONTRACTOR			DESIGNED KC 24.07.2020		PROJECT NAME		DRAWING No.			
										CHECKED JD 24.07.2020		ADSS LINE DESIGN ON EXISTING 11kV LINE - EAST HONIARA		SK-04			
										DRAWN KC 24.07.2020		PROJECT DESCRIPTION EASTERN NETWORK ADSS LINE DESIGN		PROJECT No.			
										CHECKED JD 24.07.2020				DRAWING TITLE ADSS SPLICE ENCLOSURE			
										APPROVED IK 24.07.2020							
										A3		SCALE: AS SHOWN		SHEET		REVISION	
																A3	